

## FAQS

### What is Mixed Rigid Plastic?

Bulky Mixed Rigid Plastic or MRP is an industry term that defines a category of recyclable plastic. It includes hard or rigid plastic items, as opposed to film plastic (plastic bags, pallet shrink wrap, plastic hoses and other flexible plastic items). The Bulky Mixed Rigid Plastic Recycling Program (see the list of acceptable MRP on the inside of this flyer) is for materials that are larger than 5 gallons in size.

### What is the raw material used to make plastics?

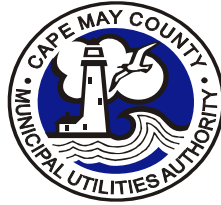
Crude oil. Polyethylene, the lightest fraction of refined oil, is the raw material used to make the many and varied plastic resins we use every day.

### What does plastic resin mean?

Plastic resins are particular types of plastics with well defined characteristics and specific chemical compositions. Examples are high density polyethylene (HDPE), poly vinyl chloride (PVC) and polystyrene (PS).

### How are MRPs recycled?

When the CMCMUA accumulates a truckload of MRP, the plastics are baled and shipped to recycling facilities that sort plastic resins, remove metal, shred, wash and sometimes pelletize the plastic. The recycling facilities sell large boxes of tiny flakes or pellets as secondary raw material to manufacturers. New products such as: plastic buckets, lumber, barrels and furniture are fabricated using recycled plastic rather than virgin plastic derived from crude oil.



LANDFILL COMPLEX (SLF)  
2050 ROUTE 610  
WOODBINE, NJ

#### Winter Schedule

1/1/2015 – 5/22/2015 and 9/14/2015 – 12/31/2015

Monday – Friday, 7:30 AM – 4:00 PM  
Saturdays 8:00 AM – 12 NOON  
Closed Sundays

#### Summer Schedule

5/23/2015 – 9/13/2015

Monday – Friday, 7:00 AM – 4:00 PM  
Saturdays 7:00 AM – 12 NOON  
Closed Sundays

SLF CLOSED ON THE FOLLOWING HOLIDAYS:  
New Year's Day, Thanksgiving Day, Christmas Day

#### TRANSFER STATION (TS)

650 SHUNPIKE ROAD, ROUTE 620  
BURLEIGH (MIDDLE TOWNSHIP), NJ

#### Winter Schedule

1/1/2015 – 5/22/2015 and 9/14/2015 – 12/31/2015

Monday – Friday, 7:30 AM – 2:30 PM  
Saturdays 8:00 AM – 11:30 AM  
Closed Sundays

#### Summer Schedule

5/23/2014 – 9/13/2014

Monday – Friday, 7:30 AM – 3:30 PM  
Saturdays 7:30 AM – 11:30 AM \*\*  
Closed Sundays

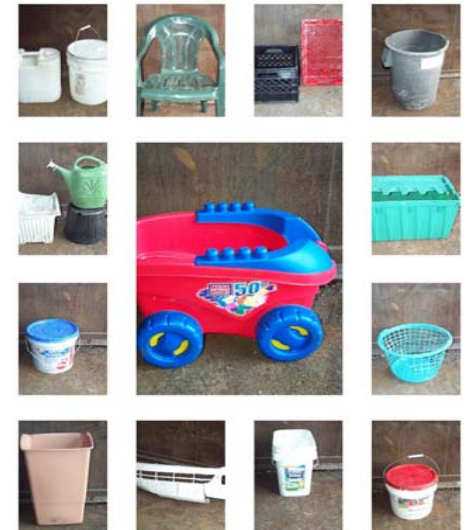
\*\* Operating hours extended to 12 NOON during July and August and on May 25<sup>th</sup> and September 7<sup>th</sup>, 2015

#### TS CLOSED ON THE FOLLOWING HOLIDAYS:

New Year's Day, Martin Luther King Day, Presidents' Day, Good Friday, Columbus Day (observed), Veterans Day (observed), Thanksgiving Day, Christmas Day

Cape May County  
Municipal Utilities Authority  
P.O. Box 610  
Cape May Court House, NJ 08210  
Phone (609) 465-9026

# Bulky Mixed Rigid Plastics Recycling Program (larger than 5 gallons in size) Cape May County Municipal Utilities Authority



## 2015



Printed on Recycled Paper

# RECYCLING PROGRAM FOR BULKY MIXED RIGID PLASTICS - MRPs

**1) WHO:** All Cape May County (County) residents, schools, businesses, municipalities, public and private agencies.

**2) WHAT:** Mixed Rigid Plastics (MRPs) are hard or rigid plastic items, not film or flexible plastic – See “Acceptable MRPs” list.

**3) WHERE:** CMCMUA Transfer Station in Burleigh and Landfill Complex in Woodbine.

**4) WHEN:** During normal operating hours. See back of flyer.

**5) HOW:** All customers can bring MRPs to the Transfer Station and Landfill **free of charge**. Some municipalities may offer a collection service or municipal drop-off location.

**6) WHY:** MRP recycling allows old plastic to be substituted for virgin plastic in the manufacture of new plastic products which:

- saves crude oil, the raw material used to make plastic,
- saves energy, since less fuel is used during the manufacturing process; and
- saves space in the County’s Landfill, extending landfill life.

## ACCEPTABLE MRPs

Plastic buckets with or without metal handles (empty) \*\*  
Plastic milk/soda crates  
Plastic laundry baskets  
Plastic lawn furniture  
Plastic landscape trays \*\*  
Plastic totes – any size (with metal)  
Plastic drums (any size)  
Plastic toys & playhouses  
Plastic children’s electronics  
Plastic pet carriers  
Plastic pallets  
Plastic coolers  
Plastic shelving  
Plastic closet organizers  
Plastic dish drainers  
Plastic flower pots with (no soil) \*\*  
Plastic traffic signs  
Empty garbage cans (any size)  
CD’s & DVD’s (and cases)  
VHS Tapes  
Blister pack  
5 gallon water bottles \*\*  
Computer housing (no circuits)  
Automotive plastics:  
Bumpers  
Bed liners (pick up trucks)  
Grills  
Side-view mirrors  
Headlights & rear lights  
Hubcaps

**\*\*5 gallons and under can go in Recycling Container with Single Stream materials**

**All Plastic Should Be Clean And Free Of Debris.**

## NON-ACCEPTABLE MATERIALS

Plastic Film (grocery bags & stretch film)  
Glass, metal, wood, paper, clothes  
Styrofoam  
Poly-coated paper (orange juice and milk cartons)  
Flexible water hoses  
Hazardous material  
Medical waste  
Narrow-neck liquid containers  
Used small mouth containers  
Small plastic containers (yogurt cups, PET/HDPE bottles, etc. **These are accepted as Single Stream Materials**)  
Oil/chemical containers  
PVC Pipe  
Vinyl Siding

## ARE MRPs COLLETED WITH OTHER RECYCLABLES?

Yes. MRPs that are **5 gallons or less in size** can be mixed with Single Stream materials and placed in your curbside recycling container.

This is a voluntary program. Some municipalities may offer a separate curbside collection service or a municipal drop-off location for MRPs. For information, call your municipal recycling coordinator at town hall or the department of public works.