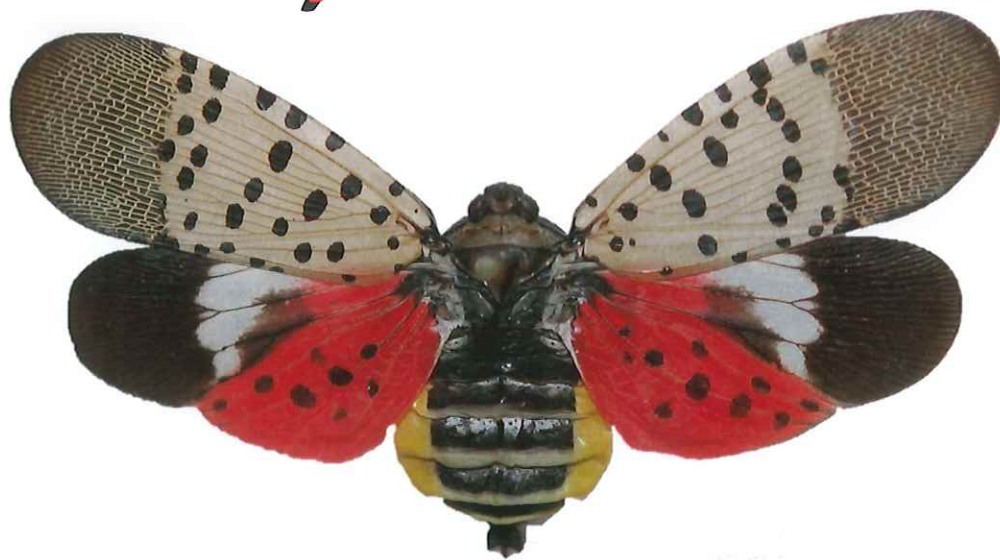


SEE IT, REPORT IT!



Spotted Lanternfly

What to do:

If you see egg masses, scrape them off, double bag and throw away.
You can also place the eggs into alcohol, bleach or hand sanitizer to kill them.

Collect a specimen:

Specimens of any life stage can be turned in to the New Jersey Department of Agriculture's lab for verification.

Take a picture:

With your GPS function turned on your smartphone or a camera with GPS, take a photograph of **ANY** life stage (including egg masses)

Submit picture to: SLF-plantindustry@ag.nj.gov

Report a site:

If you can't take a specimen or photograph, call and leave detailing your sighting and contact information

NJ Spotted Lanternfly Hotline at 1-833-223-2840 (BADBUG0)



Spotted Lanternfly - See the Signs



Nymph Stage

1st instar - April to June
2nd & 3rd - June to July
4th instar - July to Sept (red)



Adult Stage

July – December



Egg Masses

September to April
(unhatched)



Staghorn Sumac

Rhus typhina

- Toothed leaf edge
- Upright red, fuzzy fruit
- Twigs are fuzzy
- Smooth bark
- Horizontal lenticels on bark
- Grows in clonal colonies



Tree of Heaven

Ailanthus altissima

- Primary host
- Smooth leaf edge
- 1-2 teeth at leaf base
- Strong odor (burnt peanut butter)
- V or heart-shaped leaf scar
- No terminal bud
- Papery seed
- Light gray/brown bark
- cantaloupe bark pattern



Black Walnut

Juglans nigra

- Toothed leaf edge
- Large round fruit
- "Monkey-faced" leaf scar
- Chambered dark pith
- dark, rough diamond pattern bark